



Rec Adopters is a countywide Chaffee Recreation Plan program empowering everyone to care for the lands they love as outdoor recreation use increases and agency management funds decline. Rec Adopters will increase YOUR ability to take action to keep our beautiful outdoors clean, fun and wild, now and into the future.

## CHAFFEE REC ADOPTER TOOLKIT

For questions or assistance, contact Jessica Downing, Rec Adopter Coordinator - [landvolunteers@garna.org](mailto:landvolunteers@garna.org)

# WHAT YOU CAN DO AS A REC ADOPTER

## **General Monitoring:**

Observe and report impact at “adopted” recreation area, including trash, excessive campfire rings or user-created routes using the Chaffee Rec Collector app at least twice a year. This alerts agencies of actions needed and if issues are too large for volunteer action.

## **Identify User-Created Routes:**

User trails and rogue routes damage resources and can harm wildlife. Record in the Campsite Condition survey unofficial trails and roads for agency restoration. Discourage future use by covering with slash or downed trees.

## **Report Additional Issues:**

If you encounter an issue not part of a campsite (graffiti on a sign, broken fencing, bad road erosion, etc.), take a note and photos (if possible) and send it to the Rec Adopter Coordinator via email.

## **Trash Clean Up:**

Remove trash, taking into consideration personal safety especially around liquids or sharp items. DO NOT pick up hazardous or human waste. Consider bringing gloves. Safety vests and biodegradable bags are available upon request.

## **Campfire Ring & New Site Clean Up:**

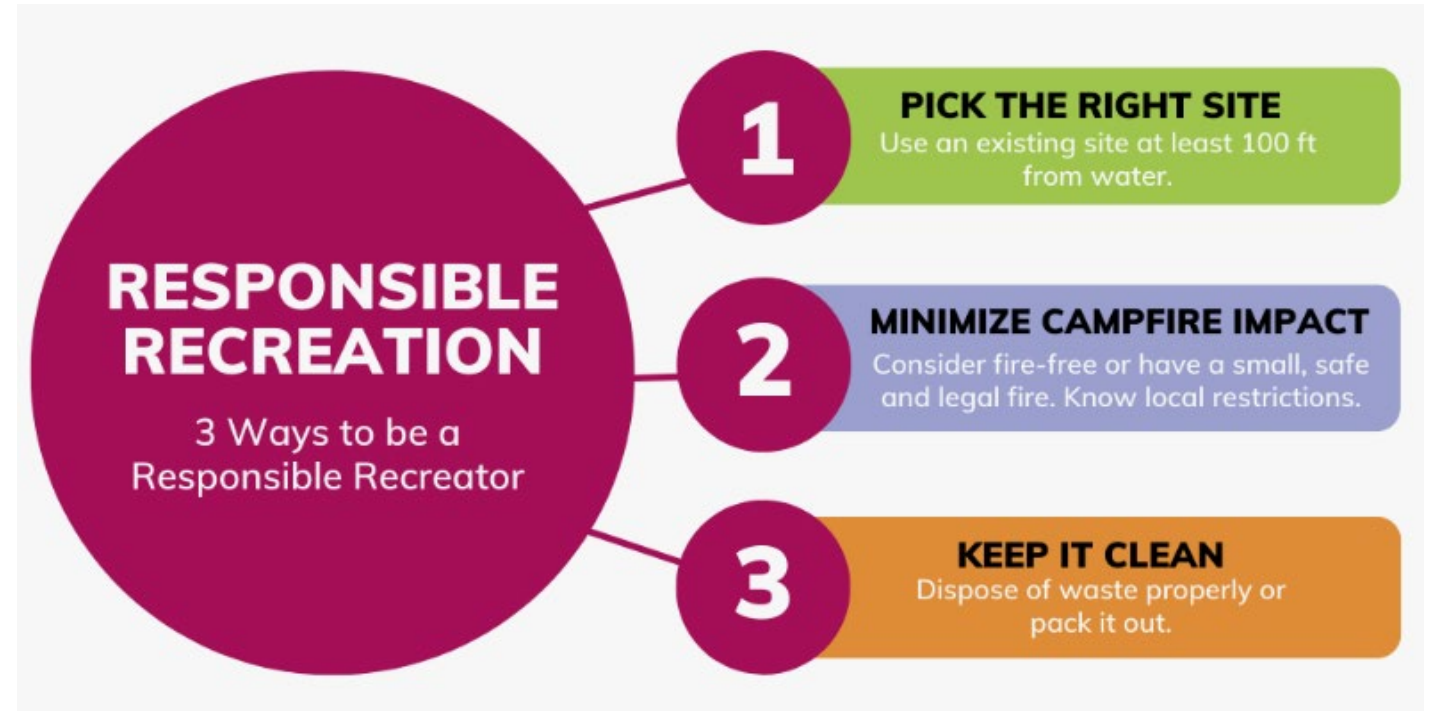
Remove new/excessive campfire rings by dispersing rocks and packing out cool ashes. A good size fire ring is 3-4 feet in diameter with large rocks stacked. Report any illegal, smoldering or abandoned campfires to 911. For new sites, rake over tracks/fire ring and cover with brush.

## **Identify Projects:**

Does an area need a specific project? Maybe dog waste stations or a large-scale clean up, or fencing to contain a site? We can help initiate and support project days, agency input and more.

# RESPONSIBLE RECREATION

- Volunteers are not expected to enter occupied campsites.
- If the opportunity for positive visitor interaction arises, describe what you are doing and the program goals. Consider sharing with them responsible recreation points.



# VOLUNTEER SAFETY

- If you encounter an unmonitored fire, a fire out of a fire ring, a fire during a fire ban, or illegal behavior, do not engage and call 911. There is also a place to report this in the app.
- For non-emergency safety concerns, contact the Rec Adopter Coordinator.
- Do not use chainsaws or other similar equipment as a Rec Adopter.



## Reporting Volunteer Hours

After a volunteer day, please submit your hours at the Volunteer Hours link at

<https://envisionchaffeeounty.org/rec-adopter/quick-start-guide/>

(Bookmark the link for easy reporting!!)

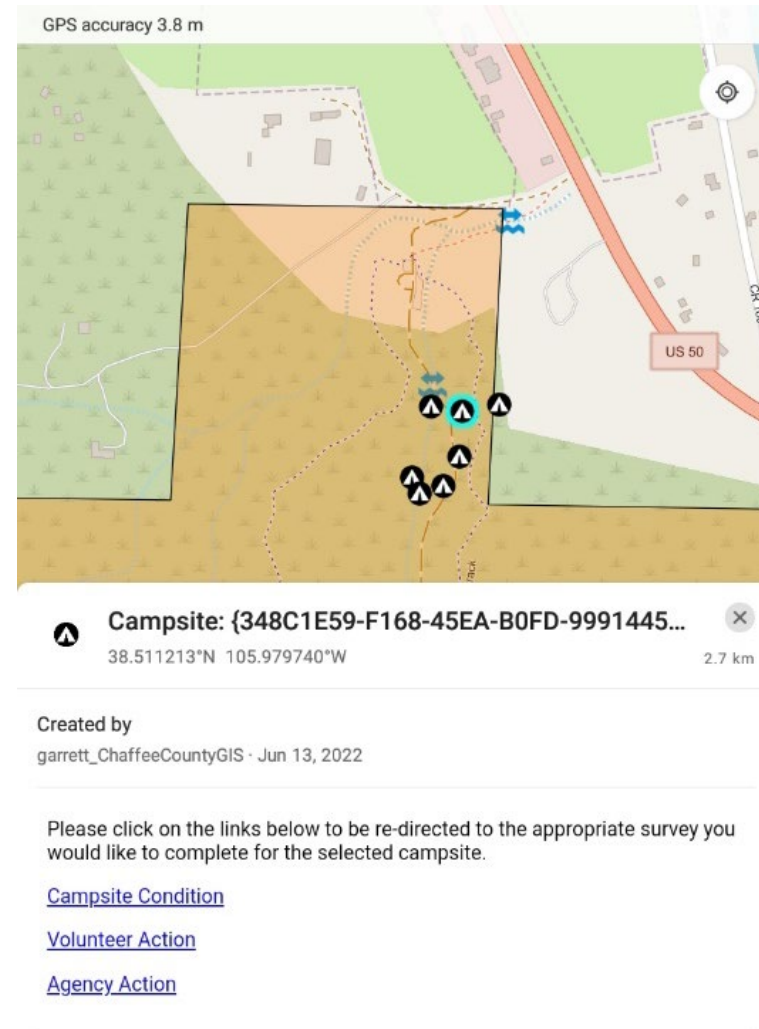
*For questions or assistance, contact Jessica Downing,  
Rec Adopter Coordinator - [landvolunteers@garna.org](mailto:landvolunteers@garna.org)*



# USING THE CHAFFEE REC ADOPTER APP

## Performing a Volunteer Action:

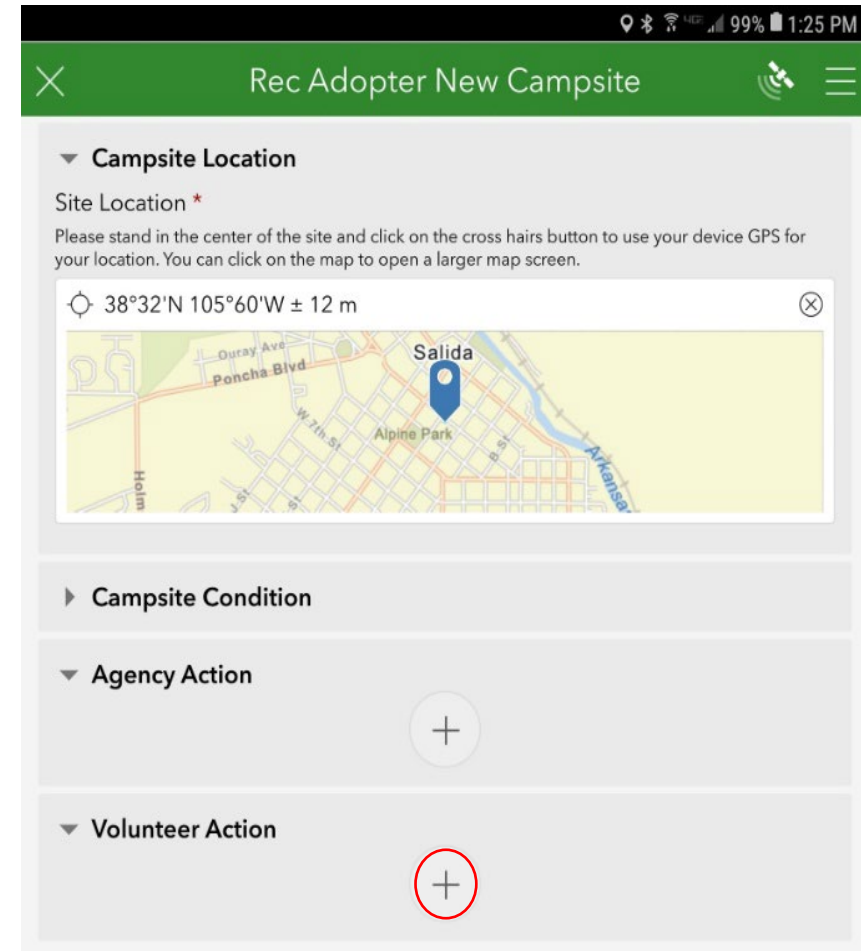
- Launch **Field Maps** and select the campsite (ideally, GPS has your “dot” at the campsite to be surveyed). Tap the highlighted tent icon and select the Campsite ID.
- *First:* Select the **Volunteer Action Survey** (which opens Survey123) to record the performed actions. Save in outbox to sync when in a wifi zone.
- *Second:* Select the **Campsite Conditions** survey in Field Maps and record the condition of the site *after* the volunteer actions are complete.



# USING THE CHAFFEE REC ADOPTER APP

## Performing a New Campsite Collection:

- Launch **Survey123** and select the Rec Adopter New Campsite Survey. Your GPS will mark your Campsite Location to mark a new site.
- If you will perform **Volunteer Action**, do that survey **FIRST**. Collapse the "Campsite Condition" drop down arrow and select the + next to Volunteer Action and fill out the Volunteer Action Survey.
- After submitting the Action survey, re-open the drop down arrow and perform the **Campsite Condition** survey.
- New campsites refresh to the map once a week on Sundays. (So don't worry if you don't see it immediately.)

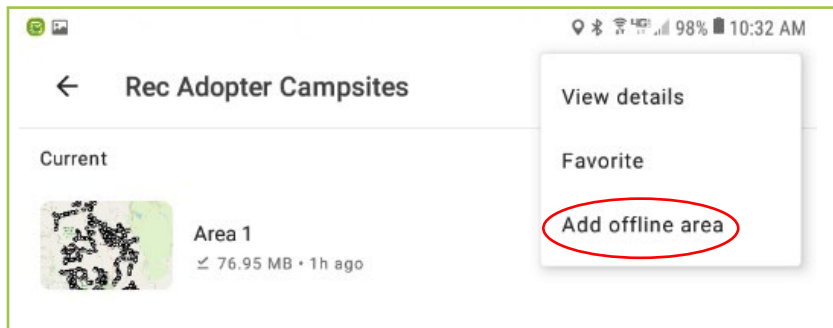
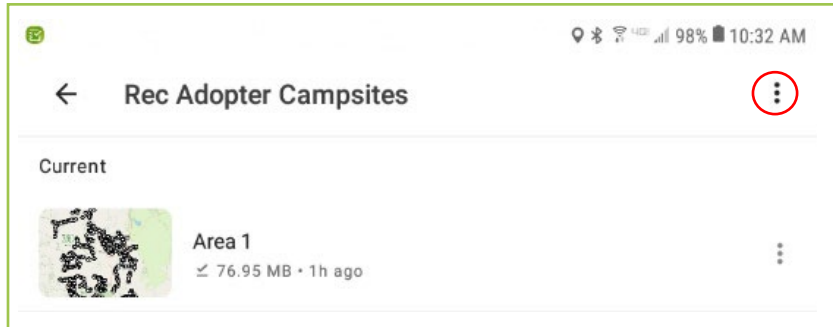


# USING THE CHAFFEE REC ADOPTER APP

## App Survey Tips & Tricks:

### Downloading Offline Maps:

Download the Rec Adopter Campsites map area for offline use in **Field Maps**. Android users may need to select map area and “Add Offline Area” from the menu and select the area of the map that needs to be downloaded.



**Campsite Names:** *Does the Campsite have an official previous name?*

This feature is for Adopter Groups that have developed separate numbering systems to organize stewardship activities among their members. If you are not part of one of those groups, enter No.

**User Name:** *How do I enter my username in the survey?*

Enter your name with no spaces, capital first and last: JaneSmith. You will need to enter your name each time unless your device remembers it.

# USING THE CHAFFEE REC ADOPTER APP

## App Survey Tips & Tricks:

**Campsite Size:** *If I'm using the polygon feature to measure campsite size, do I walk the perimeter on just the disturbed ground or should I include outer areas where visitors go to the bathroom, walk in between sites or access a nearby creek?*

Consider the entire likely usable area for the campsite itself, not including spur trails to water or other sites.

**Site Containment:** *What is a "Natural" site containment?*

Cliff or steep hill; river, creek or lake; grouping of trees too tight to pitch a tent or drive into.



**Super Campsites:** *If there is a very large area with one vehicle access point that has multiple campfire rings, do I record it as one site or many?*

Use judgement, but generally break a super campsite into separate sites per fire ring and complete an independent survey for each one.

**Immediate Action:**




If the site needs action from an agency or another volunteer day, the check box defaults to "no action needed." Uncheck the box when selecting needed actions.



# USING THE CHAFFEE REC ADOPTER APP

## App Survey Tips & Tricks:

### Collecting the Polygon for Campsite Area Capture.

1. In the Campsite Area Estimation Method box, select Collect a polygon and tap the plus button in the Site Area box. Then touch the map icon.
2. In the lower left corner, touch the polygon icon. 
3. Touch it again to start "recording."
4. Touch the polygon + button as you walk around the perimeter of the campsite, touching the + each time you change directions. The Area and Perimeter should increase as you walk around. The more you touch the icon, the more accurate the space will be. 
5. When completed the perimeter of the campsite, tap the "finish" polygon in the lower right. 
6. Touch the check mark to finish. The survey should show you a lovely polygon shape.